

# POLYX VIDEO speaker phone video handset

## TECHNICAL SHEET

ITEM 344192

### Description

Speaker phone video handset which can be connected to the 2 WIRE system BUS. It is fitted with a 3.5" colour display.

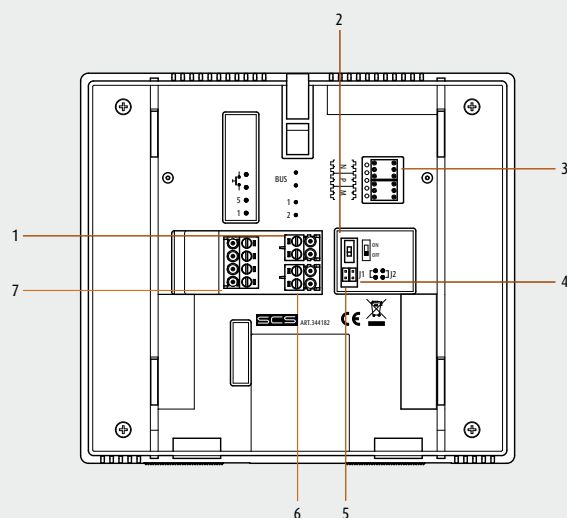
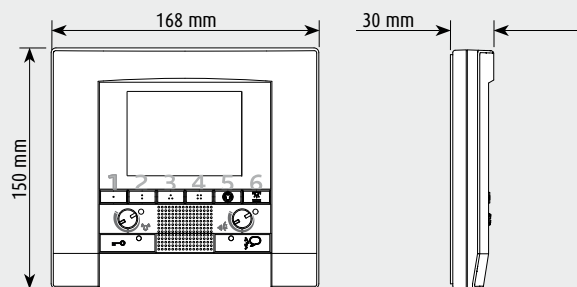
Keys included: auto-switch on, door lock release, staircase lights, mute, speaker phone connection and four programmable keys.

Notification LED for call exclusion, door status, connection.

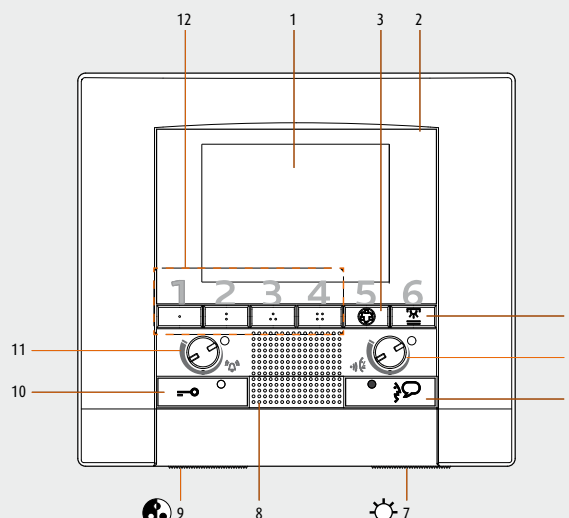
Can be installed on the wall using a special bracket.

### Technical data

- Power supply: 18 - 27 V (BUS)
- Absorption in stand by: 5 mA
- Max. operating absorption: 320 mA
- Operating temperature: 5 - 40 °C



Back



Front

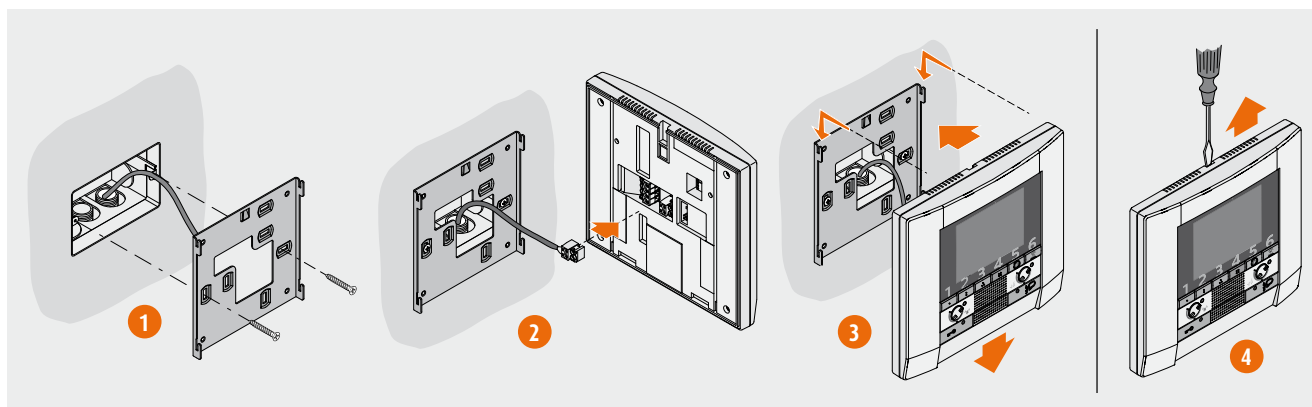
### Legend

- 1- Connector for connection to the 2 WIRE BUS
- 2- Line termination ON/OFF micro switch
- 3- Configurator housing
- 4- Jumper J2 - Master/Slave (remove to enable Slave)
- 5- Jumper J1 - remove to enable additional power supply
- 6- Connector for connection to the additional power supply
- 7- Terminals for connection to the additional functions (call to the floor + additional bell)

### Legend

- 1- LCD 3.5" colour display
- 2- Microphone
- 3- Key for entrance panel switching on/cycling
- 4- Key for staircase light switching on
- 5- Loudspeaker volume adjustment
- 6- Connection key + LED
- 7- Brightness adjustment
- 8- Loudspeaker
- 9- Colour adjustment
- 10 - Door lock key + LED
- 11 - Bell adjustment and exclusion (LED)
- 12 - 4 programmable keys

## Wall installation with metal bracket supplied



## Configuration

### N - number of the handset

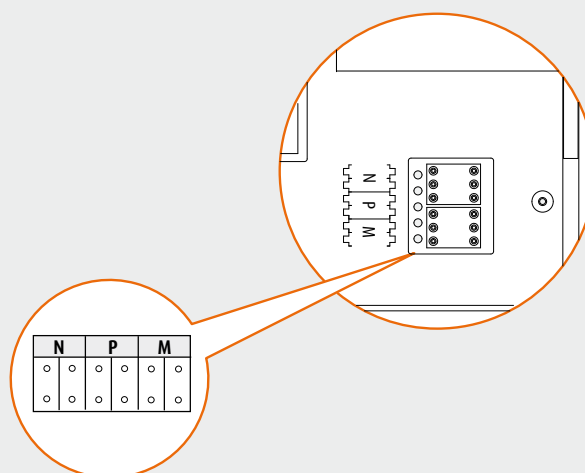
The N configurator assigns each video handset an identification number within the system. The handsets must be configured in progressive mode. Handsets with parallel connection (max 3 are allowed inside the apartment without item 346850) must be configured with the same N configurator. Additional audio handsets, video handsets and/or bells can be installed in parallel to the basic video handset.

### P - association of the entrance panel

The P configurator identifies the associated EP, or the first entrance panel that switches itself on when the pushbutton is pressed the first time, as well as which door lock with video handset at rest is activated, when the pushbutton is pressed.

### M - operation mode

the M configurator assigns the operating mode to the 4 pushbuttons, which can be programmed following the procedures shown in the following pages.



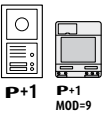

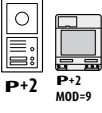
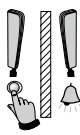
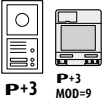
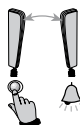



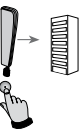


# POLYX VIDEO speaker phone video handset

## TECHNICAL SHEET

ITEM 344192

### Configuration

The following legend identifies the possible activations:

 <p><b>P+1</b> <b>P+1</b> MOD=9</p>	<p><b>Activation of the EP</b> (configured with P+1) directly, without call, or activation of the actuator item 346200 (configured with P+1 and MOD=9).</p>		<p>Activation of the scenario saved in the scenario module</p>
 <p><b>P+2</b> <b>P+2</b> MOD=9</p>	<p><b>Activation of the EP</b> (configured with P+2) directly, without call, or activation of the actuator item 346200 (configured with P+2 and MOD=9).</p>		<p><b>Intercom</b> between apartments in systems with apartment interface, item 346850.</p>
 <p><b>P+3</b> <b>P+3</b> MOD=9</p>	<p><b>Activation of the EP</b> (configured with P+3) directly, without call, or activation of the actuator item 346200 (configured with P+3 and MOD=9).</p>		<p><b>Intercom</b> within the apartment in systems with apartment interface, item 346850, or <b>intercom</b> between apartments without apartment interface.</p>
 <p><b>P+1</b> <b>P+1</b> MOD=5</p>	<p><b>Door lock release of the EP</b> (configured with P+1) directly, without call, or activation of the actuator item 346200 (configured with P+1 and MOD=5) or activation of the actuator item 346230 (configured with P+1).</p>		<p><b>Intercom</b> on itself, it sends the call to all devices with the same address.</p>
 <p>MOD=5 <b>P+2</b> <b>P+2</b> MOD=5</p>	<p><b>Door lock release of the EP</b> (configured with P+2) directly, without call, or activation of the actuator item 346200 (configured with P+2 and MOD=5) or activation of the actuator item 346230 (configured with P+2).</p>		<p>General <b>Intercom</b>, sends a call to all system devices.</p>
 <p>MOD=5 <b>P+3</b> <b>P+3</b> MOD=5</p>	<p><b>Door lock release of the EP</b> (configured with P+3) directly, without call, or activation of the actuator item 346200 (configured with P+3 and MOD=5) or activation of the actuator item 346230 (configured with P+3).</p>		
 <p>MOD=5 <b>P+4</b> <b>P+4</b> MOD=5</p>	<p><b>Door lock release of the EP</b> (configured with P+4) directly, without call, or activation of the actuator item 346200 (configured with P+4 and MOD=5) or activation of the actuator item 346230 (configured with P+4).</p>		

# Selection of the operating mode of the programmable keys:

Keys	MOD=00	MOD=10	MOD=01	MOD=02	MOD=12	MOD=03				
<div>1</div>				<div>N=1 N=3 N=2 N=1 N=3 N=1</div>		<div>N=1 N=5 N=2 N=1 N=3 N=1 N=4 N=1 N=5 N=1</div>				
<div>2</div>	<div>P+1 P+1 MOD=9</div>	<div>P+1 P+1 MOD=9</div>	<div>N=1 N=2 N=2 N=1</div>	<div>N=1 N=2 N=2 N=3 N=3 N=2</div>		<div>N=1 N=2 N=2 N=5 N=3 N=2 N=4 N=2 N=5 N=2</div>				
<div>3</div>	<div>P+1 P+1 MOD=5</div>	<div>P+1 P+1 MOD=5</div>	<div>P+1 P+1 MOD=9</div>	<div>P+1 P+1 MOD=5</div>	<div>P+1 P+1 MOD=5</div>	<div>N=1 N=3 N=2 N=3 N=3 N=5 N=4 N=3 N=5 N=3</div>				
<div>4</div>	<div>P+2 P+2 MOD=5</div>	<div>P+2 P+2 MOD=5</div>	<div>P+1 P+1 MOD=5</div>	<div>P+2 P+2 MOD=5</div>	<div>P+2 P+2 MOD=5</div>	<div>N=1 N=4 N=2 N=4 N=3 N=4 N=4 N=5 N=5 N=4</div>				

Keys	MOD=13	MOD=04	MOD=05	MOD=06	MOD=16	MOD=07	MOD=08
<div>1</div>	<div>N=1</div>	<div>P+1 P+1 MOD=9</div>	<div>P+1 P+1 MOD=5</div>	<div>1</div>	<div>1</div>	<div>N=1 N=3 N=2 N=1 N=3 N=1</div>	<div>1</div>
<div>2</div>	<div>N=2</div>	<div>N=1 N=2 N=2 N=1</div>	<div>P+2 P+2 MOD=5</div>	<div>2</div>	<div>2</div>	<div>N=1 N=2 N=2 N=3 N=3 N=2</div>	<div>2</div>
<div>3</div>	<div>N=3</div>	<div>P+1 P+1 MOD=5</div>	<div>P+3 P+3 MOD=5</div>	<div>P+1 P+1 MOD=5</div>		<div>1</div>	<div>3</div>
<div>4</div>	<div>N=4</div>	<div>P+2 P+2 MOD=5</div>	<div>P+4 P+4 MOD=5</div>	<div>P+2 P+2 MOD=5</div>	<div>P+1 P+1 MOD=5</div>	<div>2</div>	<div>4</div>

# POLYX VIDEO speaker phone video handset

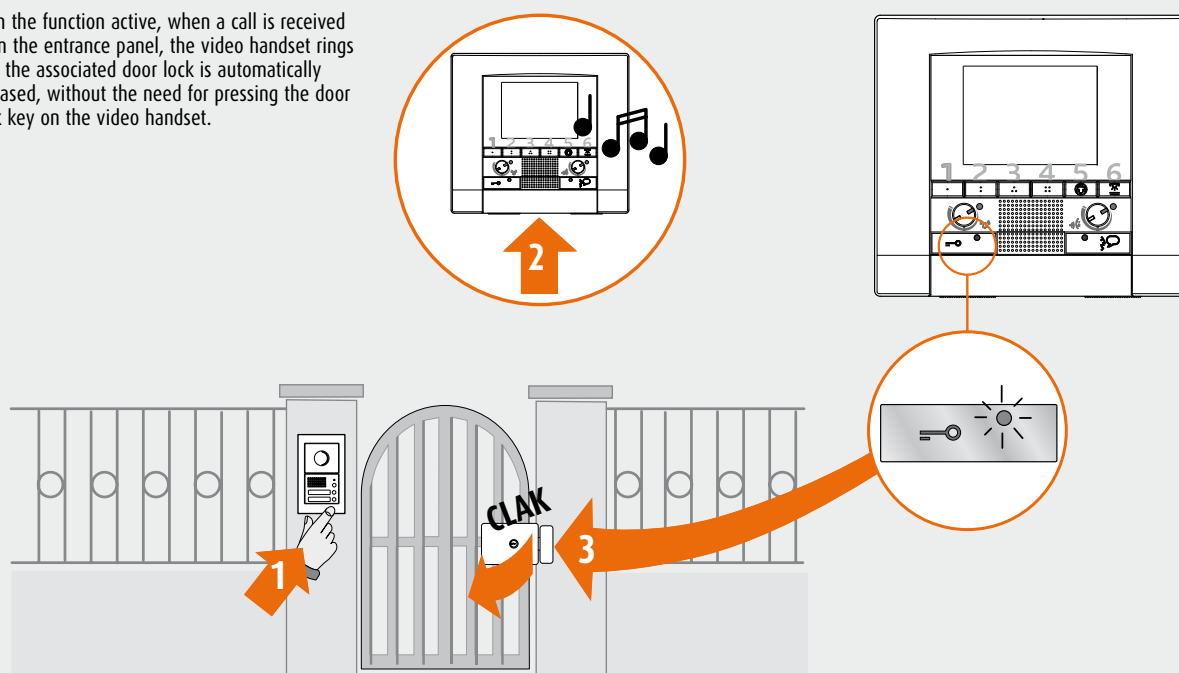
**TECHNICAL SHEET**
**ITEM 344192**
**Configuration**
**MOD configuration**

A			B	C	D	E
0	0	+  20 = B 40 = C 60 = D 80 = E	20	40	60	80
1	0		30	50	70	90
0	1		21	41	61	81
0	2		22	42	62	82
1	2		32	52	72	92
0	3		23	43	63	83
1	3		33	53	73	93
0	4		24	44	64	84
0	5		25	45	65	85
0	6		26	46	66	86
1	6		36	56	76	96
0	7		27	47	67	87
0	8		28	48	68	88

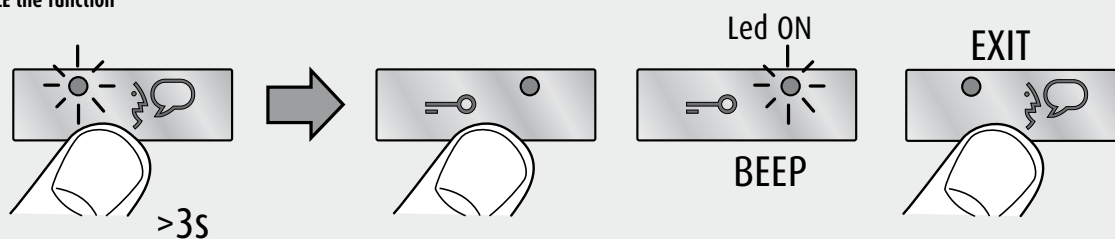
- Ⓐ Configuration of the selection for the key operation
- Ⓑ Configuration of the selection for the key operation and **OFFICE** function
- Ⓒ Configuration of the selection for the key operation and **PAGER** function
- Ⓓ Configuration of the selection for the key operation and **HANDS FREE** function
- Ⓔ Configuration of the selection for the key operation and **OFFICE + PAGER** function

## OFFICE function

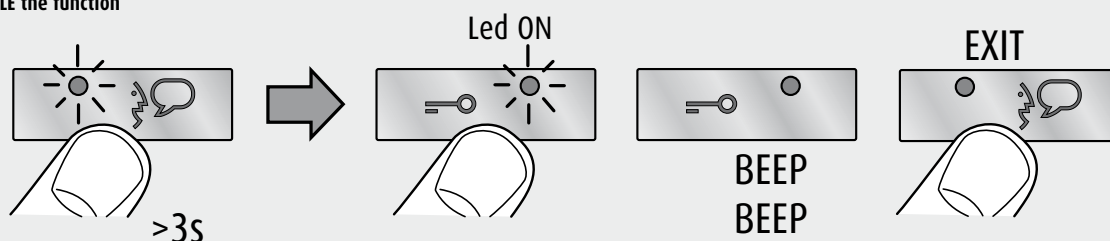
With the function active, when a call is received from the entrance panel, the video handset rings and the associated door lock is automatically released, without the need for pressing the door lock key on the video handset.



### To ENABLE the function



### To DISABLE the function



**!** This function and the "DOOR STATUS" function cannot be enabled at the same time.

# POLYX VIDEO speaker phone video handset

## TECHNICAL SHEET

ITEM 344192

### Configuration

#### DOOR STATUS function

This function notifies the status of the door lock. If open, the "door lock LED" flashes, if closed, the LED stays off.

**NOTE:** it can only be activated if the system is programmed for it; it CANNOT be activated together with the Office function.

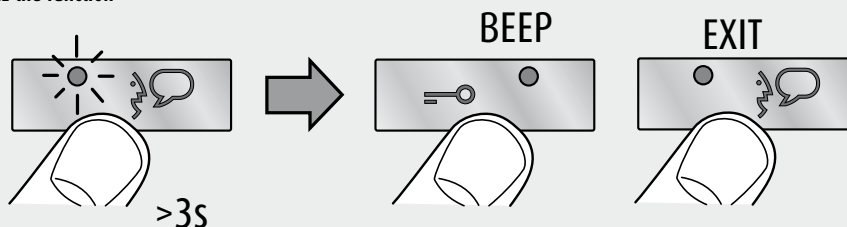
#### PAGER function

This function can be used to broadcast voice messages using the microphone of the device, through the loudspeakers of the Sound system. To activate briefly press the "Connection" key while the device is in the idle condition. The function is active when the green LED comes on. To deactivate the function press the "Connection" key again.

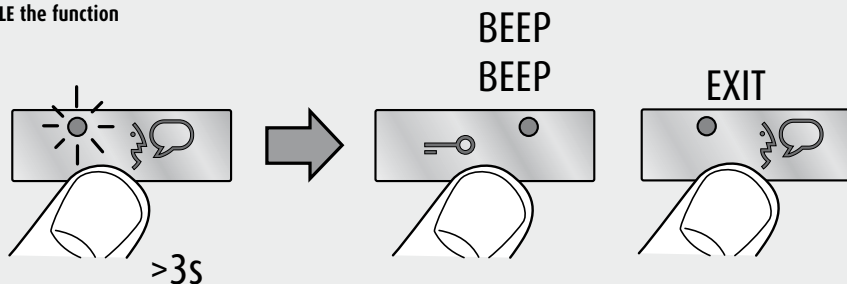
#### HANDS FREE function

The Hands Free function automatically activates the microphone and the loudspeaker when a call is received, without the need for pressing "Connection" to answer (connection is automatically established when the call is received).

##### To ENABLE the function



##### To DISABLE the function



#### PUSH to TALK function

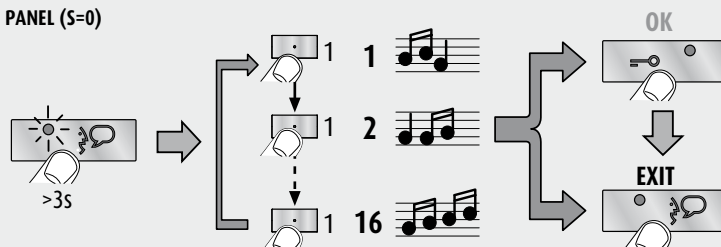
If the entrance panel is in a particularly noisy position, during the conversation it will be possible to activate the "Push to Talk" function, which will provide a less disturbed communication.

To activate the Push to Talk function during conversation proceed as follows:

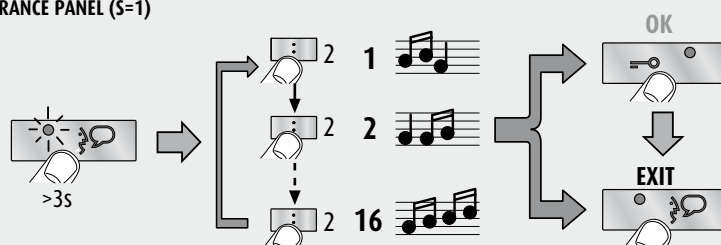
- Press the Connection key for at least 2 seconds, to activate the communication with the entrance panel. **The LED remains green.**
- Release the key to listen to the entrance panel. **The LED turns red.**
- To end the connection press the Connection key briefly. **The LED turns off.**

## Bell programming

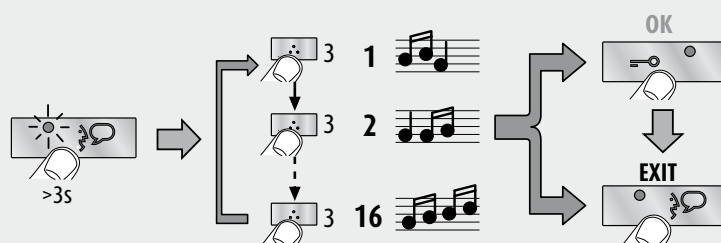
### Bell selection for MAIN ENTRANCE PANEL (S=0)



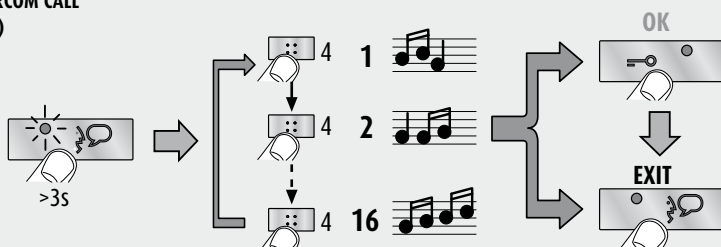
### Bell selection for SECONDARY ENTRANCE PANEL (S=1)



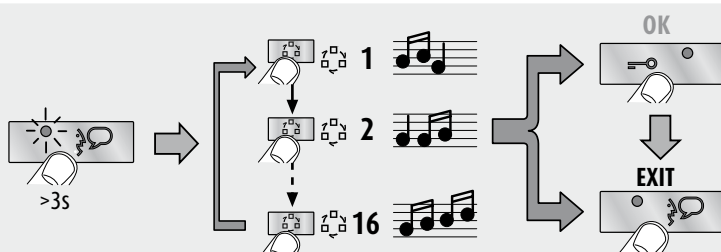
### Bell selection for INTERCOM CALL



### Bell selection for EXTERNAL INTERCOM CALL (only with interface item 346850)



### Bell selection for FLOOR CALL





## POLYX VIDEO speaker phone video handset

TECHNICAL SHEET

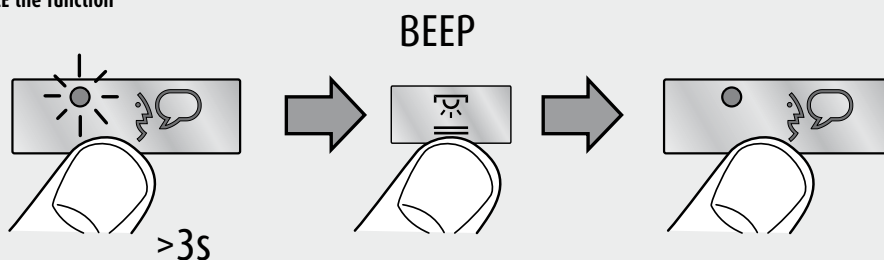
ITEM 344192

### Configuration

#### Enabling/disabling the key tone

Following the standard configuration, when any key is pressed, a BEEP is emitted. This function may be disabled/enabled with the following procedure.

##### To ENABLE the function



##### To DISABLE the function

